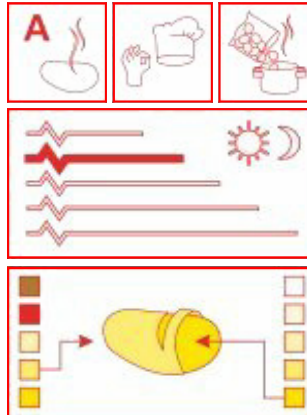


General production advice ware potatoes

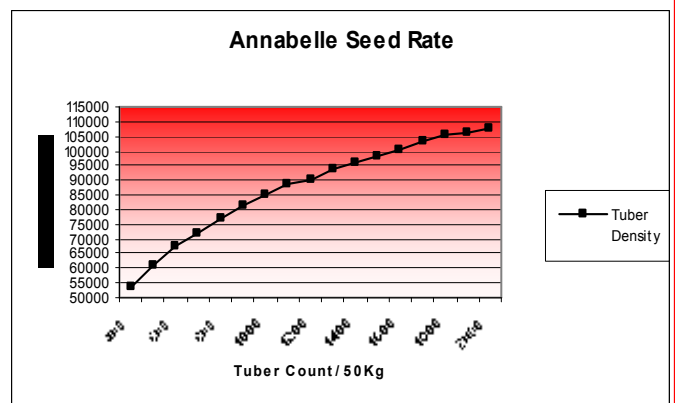
- * Very good taste
- * Firm cooking
- * Very attractive skin finish
- * High tuber number
- * Good yield
- * Early skin set



Maturity	Early
Tuber Size	Small
Tuber Shape	Long oval
Numbers of Tubers	High
Flesh Colour	Yellow
Skin Colour	Yellow
Berries	No
Dormancy	Short
Emergence	Fast
Sencorex Sensitivity	Pre Emergence only
Foliage Development	Moderate
Dry Matter	18.5
Foliage Blight	4
Tuber Blight	5
Blackleg	6.5
Common Scab	6
Powdery Scab	5
Gangrene	-
Potato Leaf Roll Virus	-
Potato Virus Y	-
PVYn	9
Yntn Tuber Tolerance	2
Spraing	7.5
Black Scurf	7
Dry Rot	6
Slugs	-
Internal Bruising	3 (1=low 20=sensitive)
Little Potato Disorder	Not sensitive
PCN R01,4	Resistant
PCN Pa2 Pa3	No Resistance

(1 = Susceptible, 9 = Resistant)

Plant Population



Fertiliser

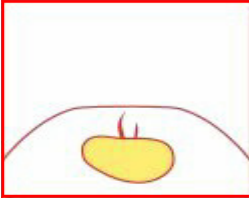
Annabelle needs a regular fertilizer management.

120% of the of Nitrogen is requirement at planting to develop early canopy and keep the crop vigorous.

Phosphate and Potassium to RB209

General production advice ware potatoes

Pre-treatment and planting



Do not plant the potatoes directly from cold store but allow the seed to acclimatise to outdoor temperature.

Plant deeper than soil level for more efficient use of water and nutrients, and to help prevent greening and tuber blight.

Tuber and or soil treatments are advised to control *Rhizoctonia* and other soil borne skin diseases.

Good results from the planting of cut tubers (50mm +) has been achieved. Cut just prior to planting to achieve best results.

Growing attention points

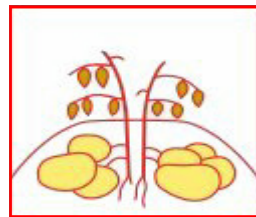


Annabelle is sensitive to Sencorex (Metribuzin) use pre emergence only. The use of Centium (Clomazone) is not recommended as some sensitivity has been seen.

Annabelle is slightly sensitive to foliage and tuber blight, use a robust programme , including actives with good tuber protection.

Annabelle is a first early variety and therefore will naturally mature at burn down and set skin very quickly

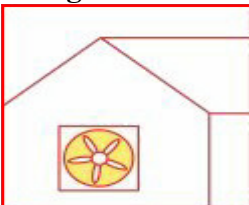
Haulm killing and harvest



Skin set will be achieved quickly on Annabelle providing the crop was mature at burn down. Aim for a timely harvest to minimise skin diseases.

Annabelle has a slight susceptibility to *Fusarium*, keep harvester damage to a minimum to prevent issues in storage

Storage



Annabelle has a short dormancy, disease and damage will lead to premature break of dormancy.

Storage periods longer than 2 months will require very good ambient or refrigerated storage.

Keep condensation and dust to a minimum in store to prevent the spread of skin diseases.